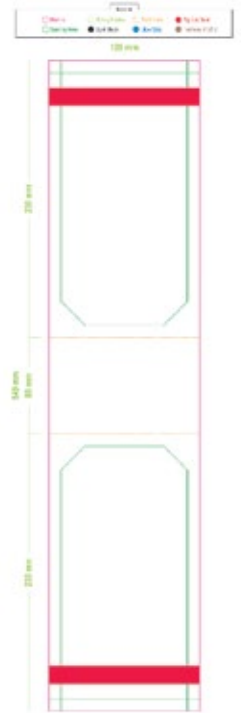


# ISOTONIC DRINK - TROPICAL



An extremely reliable way to rehydrate during or after an intense workout. Available in great flavours, this drink is perfect for all occasions.

## Ingredients:

Castor Sugar (98%), Citric Acid, Flavouring (Granadilla), Colourant (E110, E122), Acidity regulator (Magnesium Oxide) (E530), Anti-caking agent (E551), Potassium Chloride, Ascorbic Acid (Vitamin C), Salt.

Nutritional Information	Per 100 g
Energy kJ / kcal	1693 / 405
Fat (g)	<0,10
Of Which: Saturated (g)	<0,10
Carbohydrates (g)	99,6
Of Which: Sugar (g)	99,4
Fiber (g)	<0,50
Protein (g)	<0,33
Sodium (mg) / Salt (g)	26 / 0.1

**Allergens:** None.

**Warning Statement:** Warning this product has been packaged in a factory that uses Soybean, Peanuts, Sulphur Dioxide, Tree Nuts [Almonds, Cashews, Hazelnuts], Egg, Fish & Sesame Seeds.

### Instructions:

- Add 500ml of water per 50g of product.
- Consume by best before date. Does not require refrigeration.
- Store in a cool, dry place away from direct sunlight.  
(0–26 °C or 32–78.8 °F) (45–60%RH)
- Halaal.

### Shelf Life:

- Minimum 60 months at 25 °C.
- Shelf life is reduced to 12 months if stored in 37 °C.
- Shelf life is reduced to 6 months if stored in above 37 °C.

• **Packaging** - Type VI (Polyester/Polyethylene/Aluminium Foil/Polyethylene or Ionomer Resin).



### Legend:

- Carbohydrates - 99.6%
- Fat - <0.1%
- Protein - <0.3%

# CHOCOLATE GRANOLA (NON-DAIRY)



Granola makes for a fantastic breakfast option. In addition to protein and fiber, you get a good amount of iron from Granola, as well as some potassium and calcium. This one comes packed with delicious chocolate which compliments the granola perfectly.

## Ingredients:

Chocolate Granola [Rolled OATS, Cocoa Powder, Corn Flakes, Rice Crispy, Vegetable Oil, Brown Sugar and Chocolate, SOYA Powder] (87%), OAT Flour, White Sugar, Maltodextrin, SOYmilk [Maltodextrin, Vegetable Fat (Palm Fruit; Antioxidant BHA), Emulsifier (E471), SOY Protein, Stabilizer (E452), Anticaking Agent (E551)], Thickener(E415), Salt, Cloudifier, Flavouring.

Nutritional Information	Per 100 g
Energy kJ/kcal	1731/414
Fat (g)	12,8
of which Saturated (g)	5,5
Carbohydrates (g)	57,9
of which Sugar (g)	20,3
Protein (g)	8,4
Dietary Fibre (g)	16,3
Sodium (mg) / Salt (g)	120 / 0,3

**Allergens:** Soybean, Gluten.

**Warning Statement:** Warning this product has been made in a factory that uses Peanuts, Tree Nuts [Almonds, Cashews, Hazelnuts], Sulphur Dioxide, Egg, Fish & Sesame Seeds.

**Instructions:** Add 125ml to 150ml cold water to product until your desired consistency is met.

### Shelf Life:

- Minimum 60 months at 25 °C.
- Shelf life is reduced to 12 months if stored in 37 °C.
- Shelf life is reduced to 6 months if stored in above 37 °C.

• **Packaging - Type XII** (Polyester/Aluminium/Polypropylene or Copolymer of Propylene/Ethylene (With Press Seal)) + Nylon.



### Legend:

- Carbohydrates - 57.9%
- Fat - 12.8%
- Protein - 8.4%